



## HSCB Annual Report 2013/14

### Supplementary Data

### Number of Children Subject to a CP Plan

|   | at 31.3.13 | at 31.3.14 |
|---|------------|------------|
| No of children subject to a Child Protection Plan       | 208        | 233        |
| No of children on a CP Plan who are also Looked After   | 11         | 8          |
| No of children who were previously subject to a CP Plan | 39         | 57         |
| No of children whose CP Plan was longer than 6 months   | 71         | 127        |

## Category of Abuse

|   |     |     |  |
|---|-----|-----|--|
| Emotional Abuse                               | 89  | 115 |  |
| Emotional Abuse, Neglect                      | 24  | 19  |  |
| Emotional Abuse, Neglect, Physical Abuse      | 0   | 4   |  |
| Emotional Abuse, Neglect, Sexual Abuse        | 3   | 0   |  |
| Emotional Abuse, Physical Abuse               | 30  | 17  |  |
| Emotional Abuse, Physical Abuse, Sexual Abuse | 0   | 1   |  |
| Emotional Abuse, Sexual Abuse                 | 1   | 3   |  |
| Neglect                                       | 47  | 59  |  |
| Neglect, Physical Abuse                       | 0   | 3   |  |
| Neglect, Sexual Abuse                         | 3   | 4   |  |
| Physical Abuse                                | 1   | 6   |  |
| Sexual Abuse                                  | 10  | 2   |  |
| Totals  | 208 | 233 |  |

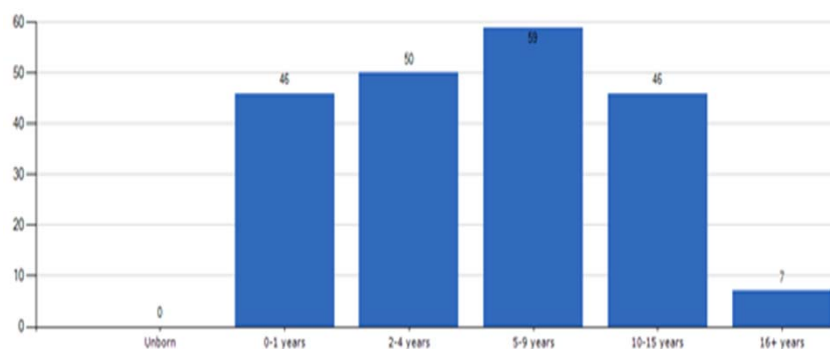
## Length of time on a CP Plan

|                                      | at 31.3.13 | at 31.3.14 | % ± |
|--------------------------------------|------------|------------|-----|
| under 3 months                       | 73         | 58         |     |
| over 3 months but less than 6 months | 64         | 48         |     |
| over 6 months but less than 1 year   | 44         | 82         |     |
| over 1 year but less than 2 years    | 22         | 44         |     |
| over 2 years but less than 3 years   | 3          | 1          |     |
| over 3 years                         | 2          | 0          |     |
| Totals                               | 208        | 233        |     |

## Ethnicity

|                           | at 31.3.13 | at 31.3.14 | % ± |
|---------------------------|------------|------------|-----|
| Dual Heritage             | 8          | 1          |     |
| Asian or Asian British    | 5          | 0          |     |
| Not recorded on Framework | 2          | 9          |     |
| Unknown                   | 2          | 1          |     |
| White                     | 191        | 222        |     |
| Totals                    | 208        | 233        |     |

## CP Plan by Age March 2013



## CP Plan by Age March 2014

